

1935 - 1939

Conn. Chess League And Club Notes: New Britain Championship Wins New Britain Chess (C
Spicacci, A R
The Hartford Courant (1923-1990); Jan 13, 1935; ProQuest Historical Newspapers: Hartford Courant
pg. A5

Wins New Britain Chess Championship



Johnson Photo.
WILLIAM H. BURLING

Conn. Chess League And Club Notes

BY A. R. SPICACCI.

New Britain Championship.

The foremost news in Connecticut chess this week is the announcement that William H. Burling won the city chess championship of New Britain. This annual fray which this time started last October came to an end this week. There were 10 participants and it is no exaggeration to say that these 10 were the Hardware City's best chess players besides Burling. William Keyser, William Gryboski, Harold Butcher, Raymond Mathewson, William Crowell, Joseph Glynn, A. R. Spicacci, Nathan Stephenson and A. Fox were the contestants for the title. Burling had the distinction of winning all of his games.

The 1935 chess champion of New Britain was born in England in 1906. He attended school in Manchester and took active part in the well-known Manchester Chess League. He became chess champion of the Refuge Assurance Company. Upon coming to this country, he associated himself with the Travelers of Hartford and twice became chess champion of the city. He joined the New Britain Chess Club in his home town and last year was the runner-up in the city championship being only half a point behind the winner. In the Connecticut Chess League last year, Burling won four out of five of the games he played in the inter city matches. One of his notable victories was in his encounter with Robert Mitchell, the present State champion.

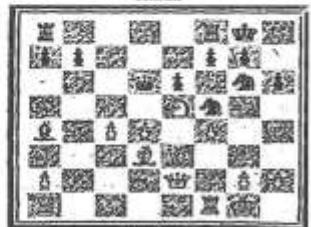
The following is a game played by Burling in the city championship and it is typical of his style of play. Caro-Kann Defence.

White	Black
1. P-K4	P-QB3
2. P-Q4	P-Q4
3. P-K3	P-K3
4. P-QB4	P-K3
5. Kt-KB3	Kt-QB3
6. Kt-QB3	B-K6
7. Q-K2	P-K3
8. B-K3	P-Kt-K3
9. Castles	B-Kt
10. P-K3	Q-R4
11. Q-B2	Castles
12. Kt-Kt5	

It appears that this attack is too premature. As it may be seen later in the game, the development of the Queen's Bishop at K3 would have been much better.

13. B-Q3	Kt-Kt3
14. P-KB4	Q-Kt-K3
15. P-B4	B-Q2
16. Q-K3	B-B5
17. H-K3	Q-Kt3
18. Kt-KB3	P-KR3
19. Kt-K5	Q-Q3
	Kt-B4

Burling.
Black.



White.
Crowell.

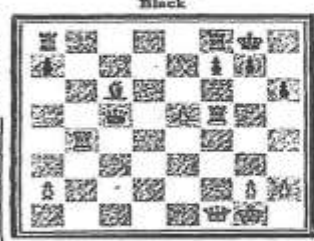
Position after 19.—Kt-B4.

It is doubtful that this exchange nets any advantage for White, it is true that to retreat the Bishop would mean a slight loss of tempo,

but with two Bishops White would have very good possibilities later on.

21. R-QK4	P-Kt3
22. P-B5	P-K3
23. P-K3	P-Kt3
24. P-Kt4	B-B3
25. P-Kt1	Q-Q4
26. B-B	Q-Kt ch.
27. P-K3	Q-Kt ch.
28. Q-B2	Q-B4 ch.
29. Q-B	
Resigns.	

Burling.
Black.



White.
Crowell.

Inter City Matches.

In the first encounter between Hartford and New Britain this season, it seems that the Capital City players set out all prepared to revenge the results of last season. It is interesting to note that both clubs had picked their five best players in this match. Although Hartford won by a decided score of 4 to 1, the games themselves were very close. The surprise of the match was the victory of the mysterious Mr. Fox over I. Burstein of Hartford. The score was:

Hartford	Pla.
Wilson	1
Mitchell	1
Clarens	1
Towers	1
Burstein	0
Total	4

New Britain	Pla.
Burling	0
Glynn	0
Crowell	0
Stephenson	0
Fox	1
Total	1

Deep River, too, was one of the victorious teams this week. The score against Collinville was 4 to 1. The following was the line up:

Deep River.	Pla.
Watrous	1
H. Johnson	1
H. Johnson	1
Pearson	0
Hazuka	1
Total	4

Collinville.	Pla.
Dr. Kilburn	0
Webster	0
Burke	0
B. Snow	0
Total	1

We have not yet received the returns for the southern section of the State, but expect to give complete results from this section next week.

City Tournaments.
Deep River is well along with its club championship tournament. Ragnar Johnson is leading with a creditable score of 10 to 6. The standing of the leading players is as follows:

	Won	Lost
Ragnar Johnson	10	6
Helmar Johnson	8	2
Fred C. Pearson	8	2
John Hazuka	2	6
Joseph Masters	2	6

The Bristol Chess Club has just started a club tournament and is offering a prize to the winner. Arthur Hanna, Henry Michelson, Paul Sandstrom, C. Broshkevitch, John Blashke, Gustav Bellmar and Arthur Krasemica are the participants. The

preliminary results of this tournament will appear next week.

Horowitz Coming to Hartford.

It is with the utmost pleasure that an announcement can now be made concerning Mr. Horowitz's coming to Hartford—he will be here the evening of January 23. All chess lovers should reserve this date as it will be an opportunity to play one of the outstanding chess players in America and to meet Mr. Horowitz, who is editor of the Chess Review. The event is being sponsored by the Travelers Chess Club and the Hartford Chess Club, and will take place in the Travelers Club Rooms, 728 Main Street.

Conn. Chess League and Club Notes

By G. E. AVERY

Hartford Chess Club
Corner Albany Avenue and
Woodland Street
North Methodist Church
Tuesdays and Fridays
New Britain Chess Club
388 Main Street
Thursday Evenings
Visitors Welcome

Results of the third round of the Inter-City Tournament of the state league were delayed as the match between the New Britain and Waterbury Chess Club teams was postponed. This was played last Sunday and the New Britain team did not profit by the postponement, losing the match by a score of 6-1. In the meantime, Deep River had defeated Enfield by 3½-1½, leaving the standing of the teams at present as follows:

	Won	Lost
Hartford Chess Club	3	0
Waterbury Chess Club	3	0
Deep River Chess Club	2	1
Travelers Chess Club	1½	1½
Enfield Chess Club	1	1
New Britain Chess Club	1	2
Waterbury Y. M. C. A.	½	1½
New Haven Y. M. C. A.	0	2
Collinsville Chess Club	0	3

CCC Chess.

Chess is played in at least one of the CCC camps. We have heard from Camp Nehantic at Chesterfield, asking for information as to chess material for beginners, which we have been glad to furnish them. Perhaps there are chess players in some of the other camps, and we would be glad to act as intermediary in bringing these together for direct or correspondence matches.

We are also glad to note the formation of a new chess club among our colored brethren, with headquarters at 2137 Main St. They are now running a tournament to determine as to the relative strength of the members.

Game of Week.

One of our fans took exception to a recent game printed in this column, asking if one of the contestants was playing ping-pong instead of chess. He may have the same opinion of one of the players in this game which was played in last year's tournament in Warsaw. The wielder of the black pieces, after sacrificing six pieces, brings about a mate. The notes interposed are by Dr. S. Tartakower, and the text is from the last issue of the "Chess Review."

Glucksherg white
Najdorf black
1. P-Q4 P-KB4
2. P-QB4 Kt-KB3
3. Kt-QB3 P-K3
4. Kt-B3 P-Q4
5. P-K3 P-B3
6. B-Q3 B-Q3
7. Castles Castles

Due to white's failure to develop his QB on his 5th move, black's stonewall position is unassailable.

8. Kt-K3 QKt-Q2
9. Kt-Kt5

With this move white strives to keep his opponent busy guarding the KP, but he is soon overwhelmed by a complete surprise.

10. K-R1 BxRP ck
Kt-Kt5

To be able to parry KixKP with Q-R5.

11. P-B4 Q-K1
12. P-KKt3 Q-R4
13. K-Kt2

Now hoping to win the Bishop by R-R1 and Kt-KB3.

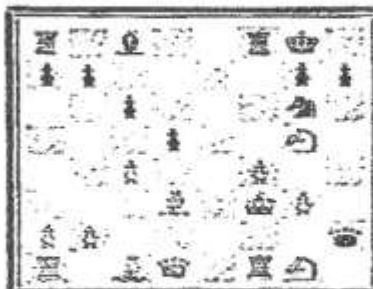
14. KixB B-Kt8!!
15. K-B3 Q-R7 ck.
16. QxP QKt-K4!!

New troops to the front.

17. QxP QKt-K4!!
18. P-Kt1 KixP ck.
19. K-B4 Kt-Kt3 ck.
20. K-B3 P-B5!!

Threatening among other things, Kt-K5 mate and B-Kt5 ck.

20. KPxP



Another brilliant variation would have resulted from BxKt. B-Kt5 ck: KxB, QxP ck: K-R5, PxB ck: KxP, R-B3 ck: K-R5, R-R2 mate.

20. B-Kt5 ck.
21. KxB Kt-K4 ck.

The final sacrifice. One may observe that all of black's minor pieces have immolated themselves upon the altar of victory.

22. PxB P-R4 mate.

Chess Club Will Meet 1936 Feb. 15 in Hale School Room

The New Britain Chess club will meet for the first time in its new headquarters at the Nathan Hale Junior High school tonight at 7:30. Granted rooms at the school where the leisure time projects are conducted, the club will meet every Thursday evening and will give instructions to all interested in the game.

It is planned to reorganize the class A and B teams to play informal matches with Hartford, Bristol and Meriden, where a team has been recently organized by former local players. The club will elect new officers and will decide whether it will take an active part in the state tournament.

CHESSMEN REORGANIZE

New Britain Club Will Hold Election of Officers Next Month — Plans Series of Matches.

Announcement was made today that the New Britain Chess club formally decided at its last meeting at the Nathan Hale school, rear building, to change the weekly meeting from Thursday night to Monday night.

The club, reorganized several weeks ago when it obtained its new headquarters at the school, will hold an election of officers next month. Among the new members are E. Roman, W. Cook, A. Casellano and William Spoor.

Herbert Dewa, ladder director, arranged the following positions in the club: Kayser, Dewa, Glynn, Cross, B. Gryboski, Nash, Roman, Gryboski, Casellano, Spoor, Stephenson and Massman. The club will meet Hartford and Bristol in a series of matches.

CHESS NOTES

The annual tournament for the chess championship of New Britain will be conducted next month under the auspices of the New Britain Chess club at its rooms at the Nathan Hale Junior High school, rear building, it was announced today.

The tournament started last January to determine the city champion for 1936 was cancelled after the club's headquarters in the United Building on Main street were destroyed by fire. At that time, Herb Dewa and Joseph Glynn were tied for first place in the tournament standing with William Burling, who won the championship in 1935, closely behind.

From present indications, it appears that the contest for the title will be between Herb Dewa and James Kayser, president, two of the first string men of the class A team. Glynn, Burling, A. G. Gryboski and William Crowell, Jr. are not in active competition but it is expected some of them will enter the tournament.

In the ladder matches last Monday at the school, Case defeated Grubar by a score of 2½ to ½. Several matches will be played next Monday.

FALCON CHESS CLUB AT FALCONS' HOME

Feb. 19, 1937
Expert May Be Invited to Give Demonstration Here

The New Britain Falcon Chess club was formally organized last night with a large attendance of members of the Falcon Nest and former members of the New Britain Chess club at the meeting at the Falcon home.

Following instructions to a group of about 25 beginners, the club proceeded to discuss plans to have meetings every Thursday night at 8 o'clock at the Falcon home and reorganize the class A and B teams for tournament play with other teams in the state.

An informal discussion was held on the suggestion that a committee from the local club be named to contact the Connecticut Chess League officials in Hartford for their cooperation in extending an invitation to one of the leading chess masters in this country to give a simultaneous exhibition at the Falcon home.

The following temporary officers were named: President, James Kayser; vice president, A. G. Gryboski; secretary and treasurer, B. A. Gryboski; team captain, Joseph Glynn, and ladder director, Herb Dewa.

Others who joined the club were Everett Cross, Stanley Nasiatka, W. Massman, Edmund Roman, Frank Grubar, J. Cassino and A. E. Spicact. The club will give instructions to beginners every Thursday night.

Dewa announced that the ladder positions will remain as in the past with the exception of a few changes. A. G. Gryboski advanced to third place by virtue of his victory over Cross last night.

FEB. 15 CHESS CLASS OPENS 1937

Instructions in chess will be given to a large class of beginners at the Falcon home by a representative of the New Britain Falcon Chess club tonight before the regular session of the club.

In the future, the club will meet in rooms recently renovated and will also hold its matches with teams of the Connecticut Chess League, which the club will enter next fall. Physical Instructor August Rosenthal has been invited to attend the meeting to assist the club in organizing the beginners into groups.

Important ladder matches to be played tonight are between James Kayser and A. G. Gryboski and Stanley Nash and W. Massman.

FALCON CHESS CLUB TO PLAY TRAVELERS

Feb. 26, 1937
Challenge for Game Sent By Hartford Organization Accepted
By Local Team.

The New Britain Falcon Chess club has accepted the challenge from the Travelers Chess club of Hartford for an informal match to be played at the Falcon home in a few weeks. President James Kayser has been

recently completed its schedule in the tournament for the state championship conducted by Connecticut Chess League, to arrange details for the first important match of the local club this year. Captain B. A. Gryboski of the Class B team is contacting members of the Bristol club for a match in that city.

Beginners were given instructions by a member of the club before the meeting and from present indications the club will have a strong team to enter in the league tournament next fall. A. G. Gryboski won the first game from Kayser in their three-game match for second position on the ladder. B. A. Gryboski defeated W. Massman in the first game of their match and a draw was recorded in the contest between Frank Grubar and J. Anderson. Everett Cross, Stanley Nash, Edmund Roman and J. Cassino are scheduled for ladder matches at the meeting next Thursday night at the Falcon home.

CHESS CLUB GOES TO NEW QUARTERS

New Rooms Engaged for Play in Falcon Building

Max. 6, 1937
The New Britain Falcon Chess club will move into its new rooms at the Falcon home next Thursday night when it is expected there will be a large attendance on hand to inspect the recently renovated headquarters.

Captain E. A. Gryboski of the Class B team reported that an informal match with the Bristol team will be played next Friday at the New Departure fire department club rooms, Bristol. New Britain will be represented in Captain Gryboski, Everett Cross, W. Massman, Stanley Nash, Edmund Roman, J. Cassino and Frank Grubar. Acting Captain James Kayser of the Class A team is arranging a match with the Travelers' team in Hartford for the latter part of this month.

Grubar was successful in defending his position on the ladder with a brilliant victory over J. Anderson. Conducting the white pieces in the king's game, Grubar emerged into the middle game after a faulty opening and was forced to sacrifice a minor piece for a pawn. As the game progressed, he made an advantage in a position that gained him his piece back and a passed pawn that resulted in victory.

Tournament Director Warren A. Hough of the Connecticut Chess League notified A. G. Gryboski of the local club that a tournament for the state individual championship will be held from March 26 to April 10 at the following places: March 26, Travelers club, Hartford; March 27, Endee club in Bristol; April 5, possibly the Falcon home; April 6, Waterbury Y. M. C. A. and April 10, to be announced. The tournament will be discussed at the meeting of the local club next Thursday night and it is expected that several players from this city will enter. Any player residing in or attending school in Connecticut may enter.

Conn. Chess League And Club Notes

BY G. E. AVERY.

Hartford Chess Club
No Meeting Until Sept. 8
New Britain Chess Club
Fallon Home
Broad St.
Thursday Evenings
Visitors Welcome

Foreign Field.

Chess circles in America being quiescent at present, we take this opportunity to gather up some threads in the foreign field. A number of more or less important tournaments have been held in Europe during the spring and summer. Possibly the first of these of note took place at Lodz where there were 15 contestants. This was won by the young master, Pirc of Yugoslavia, who scored 11½ points. Tartakover of Poland came in second, followed by Petrov of Latvia, Stahlberg of Sweden, Eisekhaes of Austria, and the rest of the field.

The Margate Chess Congress this year did not have as many prominent entries as usual. Out of 18 entries for the Premier Tournament, only four came from outside of England. The winner was World Champion Alekhine of France, who won six games, lost one and drew two. R. Spielmann of Vienna took second prize.

The more recent tournament held at Noordwijk proved a triumph for Eisekhaes of Austria, who scored 7½ points to win. His nearest competitor was Keres of Estonia, and third place was taken by Pirc of Yugoslavia. Dr. Euwe, former world champion, made a poor showing, coming in fourth, due no doubt to the fact that he worked all day at his usual tasks and was not in good mental condition for the contests.

Coming events include the meeting of the British Chess Federation at Brighton, now in progress, the Plymouth Chess Congress, featuring Dr. Alekhine, to take place next month, and a mammoth tournament at Avro in November. It is announced that Alekhine, Euwe, Capablanca, Flohr, Reshevsky, Botvinnik, Fine and Keres will compete in a double-round tourney.

Latest information indicates that the next world championship contest will take place next year between Dr. Alekhine and Selo Flohr.

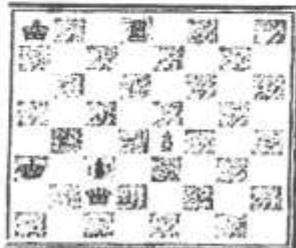
32 Q-K7 ch K-Q4
33 Q-Q7 ch K-K2
34 P-B7 R-K7 ch
35 K-B3 R-K8 ch
36 K-N4 R-Q6
37 Q-K6 ch B-K4
38 Q-B4 ch R-Q5
39 Q-K7 ch K-Q4 ch
40 K-B3 P-Q8-Q
41 Q-N3 ch K-Q3
42 P-B8-Q ch K-K2
43 Q (B1)-QN8 male

Problems.

Answer to last week's problem, giving black his best move.

White Black
K-B2 N-QK4
Kt-B2 BxB
Kt moves B moves

The following, by Otto Wurzburg, was printed in the Deutsch Schachzeitung some years ago. It is a simple three-move problem.



Combie Champion.

Commuters on the early train from South Norwalk to New York City have noted with growing concern a young dark complexioned chap who sits by himself and studies for hours a strange device with small celluloid discs stuck on it. But he is only Tapp Taves of the Norwalk Chess Club, and the strange device is a pocket chess set on which he is trying to find a compensating answer to a move sent him by a Seattle opponent in a correspondence game.

Young Taves (we old timers haven't granted him the title of "mister" as yet) is one of the most enthusiastic students of chess in the southern part of the state, and his chess career should be one to be proud of if he continues his interest. Although born in South America, Taves secured his major education at Rensselaer Polytechnic Institute of Troy, N. Y., and while there played on the club chess team.

During the last season's inter-city tournament run by the state league, Taves played six games for the Fairfield County Club, winning five of them, in the most valuable player standing, he stood seven among the players of all of the teams. In his own organization, the Fairfield County Chess Association, Taves was runner-up for the title of champion of the association, losing in the play-off to Gus Nagel of the Crown Chess Club of Bridgeport.

In the recent state individual championship tournament, Taves survived the preliminary play, and in the final play-off stood third in his group.

Game Selection.

Our selection this week is a game played in the state tournament between Taves and Robert Mitchell of the Hartford Chess Club. Early in the game Taves sacrificed a Rook for a Bishop and an attack. The latter lasted for nearly the entire game. This, we believe, is one of the most interesting games played last year.

Taves white	Mitchell black
1 P-K4	P-QN4
2 N-KB3	N-QB3
3 P-Q4	PxP
4 NXP	N-KB3
5 N-QB3	P-Q3
6 B-K2	P-KN3
7 B-K2	B-N2
8 N-N2	B-K3
9 O-O	Q-Q3
10 P-KR3	O-O
11 P-KB4	N-K1
12 P-B5	PxP
13 PXP	BxP
14 N-Q5	BxNP
15 R-N1	B-N2
16 RxB	QxR
17 R-Q1	Q-K4
18 B-KB4	Q-K3
19 Q-RA	P-KB4
20 B-B4	K-R1
21 Q-R4	Q-Q2
22 B-KR8	P-K3
23 N-B4	R-B3
24 B-KN5	P-Q4
25 N-B5	Q-KB3
26 RxB	N-B3
27 B-K3	N-Q1
28 B-R3	Q-K3
29 N(5) Q3	NxR
30 N-K3	Q-B4 ch
31 K-R2	QR-KB1
32 B-N6	RxB
33 N-BXR ch	K-N1
34 N-K1 ch	QxN
35 BxQ	RAN ch
36 K-R1	R-B2
37 Q-QN4	P-QR4
38 Q-N	RxB
39 Q-R7	B-B8
40 P-R3	P-Q3
41 Q-N8 ch	N-K1
42 Q-N3 ch	K-B2
43 Q-R4	N-R3
44 Q-R6	P-K4
45 P-N1	PxP
46 PxP	P-K3
47 P-N5	P-Q6
48 PxP	PxP
49 PxB	R-K8 ch
50 K-N2	P-Q
51 Q-N7 ch	K-K3

OCT. 1938

CHESS MEN ELECT KIRKHAM CAPTAIN

Alan Burr Named Co-Captain of Class A Team

Judge John H. Kirkham, former state chess champion, was elected captain of the Class A team at the meeting of the New Britain and Falcon Chess club last night at the Falcon home on Broad street.

Judge Kirkham will lead the New Britain team against the Yale team on Saturday, October 29, at the New Haven Y. M. C. A. in the first match for the state championship conducted by the Connecticut Chess League.

Alan Burr, who is headed for the club's championship, was named co-captain. The following members were named to play in the Yale match: Burr, Joseph Glynn, A. G. Gryboski, Judge Kirkham and William Crowell, Jr.

Captain of the B team for the season will be B. A. Gryboski with Stanley Nash acting as co-captain. A match is being arranged with the Bristol B team.

Brilliant games played by Judge Kirkham while he was captain of the Yale team and later state champion were reviewed by members at the club last night. In the collection is his game played against Marshall, United States champion for 25 years, which Judge Kirkham drew.

NEW BRITAIN HERALD

Conn. Chess League And Club Notes

BY G. E. AVERY.

Hartford Chess Club
Hotel Bond Friday Evenings
New Britain Chess Club
Falcon Home
Broad St.
Thursday Evenings
Visitors Welcome

All matches in the Connecticut Chess League, through the seventh round, have been completed except the Deep River-Hartford Knights match, and in the B division between Deep River and New Britain. The standing with these omissions:

	won	lost
Hartford Bishops	6½	1½
Yale Club	5½	2½
Hartford Knights	5	3
New Britain	4½	3½
New Haven YMCA	4	3
Bristol	3½	3½
Deep River	3	4
Travelers	2½	4½
Waterbury YMCA	2	4
New London	1½	4½
Meriden	1	5½

B Division.

	won	lost
Hartford	5	0
Deep River	4½	1½
Waterbury C. C.	4	2
Travelers	1½	4½
New Britain	1	4

The seventh round matches heard from since last Sunday are:

New London vs. Meriden.			
Dimeck	½	Engelhardt	½
Vanatta	½	Blitchell	½
Ames	0	J. Blachura	1
Hertz	1	Staszewski	0
Radoski	1	Czarnecki	0

Travelers B vs. Waterbury CC.			
Mough	½	Kellor	½
Byron	1	Harel	0
Taylor	½	Torsky	½
Smith	1	Campbell	0
Silesky	½	Warner	½

Eighth Round.

The only match reported in the eighth round now being played is that between the Hartford Knights and the New Haven YMCA, this being won by the local team. Complete score next Sunday.

Conn. vs. Rhode Island.

While definite word has not as yet been received from Providence, the entertainment committee of the state league believes it is in order to announce that all those planning to take part in the inter-state match should gather at the club rooms of the Travelers Insurance Company, 720 Main Street, Hartford, Saturday evening, February 11, from 6 to 8:30, and that dinner will then be provided at a moderate cost. The match play will start at about 9 o'clock. While it is expected that the best players in the state attending will be picked first to play on the Connecticut team, all interested may attend the meet and the dinner. The Rhode Island players threaten to come over with thirty of their best, and it is up to us to give them a hearty welcome. At the last meeting between these groups, Connecticut came out ahead by a score of 17½ to 15½.

Waterbury Championship.

A joint committee representing the Waterbury Chess Club and the Waterbury YMCA Chess Club will conduct two tournaments this year

for city titles instead of one as heretofore, namely:

First, 1939 championship of the city of Waterbury.

Second, 1939 minor championship of the city.

Both tournaments will be conducted on a single round robin basis, that is, each player will meet all other entrants in this particular tournament once. The tournament director is E. C. Powers of the Waterbury YMCA and A. B. Barker of the Waterbury Chess Club is secretary-treasurer of the committee.

Game Selection.

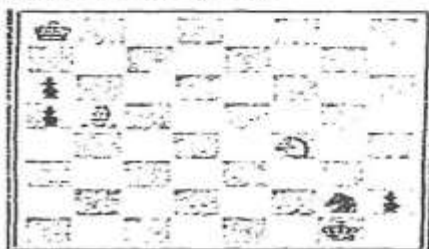
One of the more interesting games played in the state league seventh round matches is the following, taken from the New Britain-Hartford Knights match. There are some situations calling for study, but black secured the best of the end-game.

Verrille Knights white	Burr New Britain black
1 P-Q4	Kt-KB3
2 P-QB4	P-K3
3 Kt-QB3	B-K15
4 Q-E2	P-Q4
5 P-QR3	B x Kt ch
6 Q x B	0-0
7 B-K15	QKt-Q2
8 Kt-B3	P-B3
9 P-K3	Q-B2
10 B-B4	Q-Q1
11 B-Q3	P x P
12 B x P	Kt-Q4
13 B x Kt	KP x B
14 0-0	Kt-B3
15 B-K15	Q-Q3
16 QR-B1	Kt-K5
17 B-B4	Q-K3
18 B-B2	P-KB3
19 Kt-K5	Q-B3
20 P-B3	Kt-Q3
21 Q-B2	R-K1
22 P-KKt4	Q-K3
23 KR-K1	P-B3
24 Kt-K16	Q-KB2
25 B x Kt	Q x R!
26 B-B4	P-KR4
27 P-KR3	K-B2
28 K-R2	P x P
29 BP x P	K-R1
30 R-KKt1	B x P
31 Q-Kt3	B-B4
32 Q x Q	B x Q
33 R-Kt3	B-B4
34 R-KB1	R-R4
35 B-Kt3	B x P
36 R x B	R x B
37 R x B4	R-K1
38 R (B4)-R4	R-K5
39 R-R8	K (K5)-Kt5
40 R (R3)-R5	R-Kt7 ch
41 K-R3	R (Kt4)-Kt6 ch
42 K-R4	R x P
43 R (R5)-R7	K-Kt3
44 R-R6 ch	K-B4

Problems.

Key-move to last week's problem, Kt-QB3, allowing the black King to move and discover check; then white mates.

There is an interesting end-game by R. K. Guy of Atherton in the current issue of "Chess" just received. If you were to adjudicate this game, you might grant that white could draw easily, but can you find a win for white?



Death Takes Attorney On 74th Birthday

John H. Kirkham, New Britain Former Judge, Was Long Prominent Leader of Bar

New Britain, April 13.—(Special.)—Judge John H. Kirkham of 40 Lexington Street, dean of local lawyers, died Thursday on his seventy-fourth birthday of coronary thrombosis after several weeks of illness.

Born in Newington, he completed schools in this section and was graduated from Yale in 1887. While there he was prominent in athletics, became editor of the Yale News, formed the Yale Chess Club and was otherwise active in inter-scholastic events. Admitted to the bar in 1889 he started practice in this city and for some years past has been head of the firm of Kirkham, Camp, Williams & Richardson, formerly Kirkham, Cooper, Hungerford and Camp.

He was formerly judge of Police and City courts here, served many years as corporation counsel, was a member of the New Britain Club, Shuttle Meadow Country Club, Rotary, University Club of Hartford, New Britain and Falcon Chess Club, Saturday Night Club, director of the New Britain Institute library committee, Welfare Society, and other civic organizations. Golf, tennis, chess and whist were his hobbies and in all of them he distinguished himself through the years.

Funeral Saturday.

He leaves his wife, Mrs. Lillian Sprague Kirkham; a son, John; daughter, Mrs. Stanley Hart; two grandchildren, a nephew and four nieces. Funeral services will be held Saturday at 2 p. m. at the home with Rev. Dr. W. C. Timmons of the South Congregational Church officiating. Burial will be in Center Cemetery, Newington.

His death brought, among other tributes, one from the president of the New Britain Bar Association, Attorney Cyril F. Gaffney, who said, in part, of his death: "Particularly will this loss be felt by the younger members of the bar to whom Judge Kirkham gave willingly his help, advice and aid. The bar association will always point with pride to such members as Judge Kirkham."